



OPERATION GUIDE DIRECT-IT PRODUCTS

- DIRECT-IT IN (UAA1)
- DIRECT-IT (UAA2)

IMPORTANT Read these instructions before use & save instructions & packaging

Specifically developed to target areas that need high air exchange rates. Sets up in minutes. Replace fewer walls & ceilings. Dries beneath and behind cabinets and stairwells.

All components are heavy duty industrial quality for extra long life. Both are capable of drying 22 linear feet as packaged.

The Direct-It IN (UAA1) attaches to the front of most standard air-movers.

The Direct-It (UAA2) attaches positively or negatively to 12, 14, 16 & 18 inch duct rings.



IMPORTANT Safety warnings are located on page 2.

SAFETY WARNINGS

WARNING: SERIOUS INJURY CAN RESULT FROM FAILURE TO FOLLOW THESE SAFETY GUIDELINES

UAA1 WARNINGS (without bungee cords)

Use extreme caution when drilling into a wall, cabinet or any other material as there may be electrical or plumbing hazards hidden from view. Possible injuries could result.

UAA2 WARNINGS (with bungee cords)

Wear ANSI rated protective eyewear when handling any product that has bungee cords. Especially when stretching, fastening or releasing hooks.

Inspect bungee cord before use. Do not use if cord is frayed or hooks are bent or damaged.

Do not stretch cord more than 50%. (Example: 12" to max 18".) Cords can be stretched more than 50%, but could cause failure of cord or hook & result in serious eye or other injury.

Cord acts like a rubber band. To avoid being struck by hooks, do not stretch cord toward or away from you. Pull to one side and keep your face and body away from rebound path.

Use extreme caution when drilling into a wall, cabinet or any other material as there may be electrical or plumbing hazards hidden from view. Possible injuries could result.

GRAY & BLACK WATER

Operators should follow current IICRC (The Clean Trust) S500 Water Damage Restoration Standards at a minimum.

TABLE OF CONTENTS

INTRODUCTION.....	1
SAFETY WARNINGS.....	2
DIRECT-IT IN (UAA1).....	3
DIRECT-IT IN PACKING LIST.....	3
SETTING UP THE DIRECT-IT IN	4
DIRECT-IT (UAA2).....	5
DIRECT-IT PACKING LIST.....	5
SUGGESTED HOSE LENGTHS.....	6
REPLACEMENT PARTS.....	6
WARRANTY.....	7
CUSTOMER SERVICE.....	7

DIRECT-IT IN (UAA1)

For use with most standard airmovers on the market today. This adapter dries positively by moving dry air into trapped spaces.

It is recommended the drying device be set up at the center of the drying run. Install in a safe manner. Keep aisles clear and always reduce any unnecessary trip hazards. Set up warnings if trip hazards exist.



Stair Drying



DIRECT-IT IN PACKING LIST

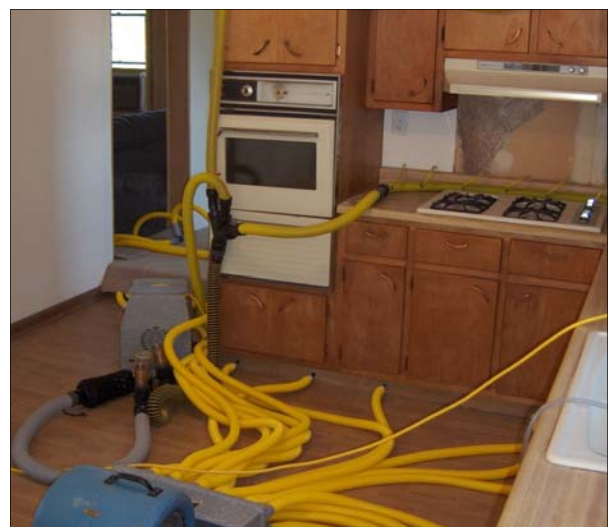
Description	Qty	Part # (if ordering separately)
Direct-It IN (UAA1)	1	UAA1-AO
1.25 x 50' hose	3	PL05
1.25" hosecuff	17	HC1
5/8" Wall Penetrators	17	WP2
End Cap Plugs	10	QCEP01
Carry Bag	1	CB1
Manual	1	



SETTING UP THE DIRECT-IT IN



Set the Air mover against the gasket (do not shove into the gasket as it might rip).



DIRECT-IT (UAA2)

The Direct-It works with axial fans, air scrubbers or other collared drying devices that fit duct ring sizes of 12", 14", 16" & 18". The adapter can be attached to dry either positively or negatively.

The back of the Direct-It resembles a set of stair steps, and will simply slip into the correct size opening of your drying equipment.



Wall Drying



Cabinet Drying



Description	Qty	Part # (if ordering separately)
Direct-It (UAA2)	1	UAA2-AO
1.25 x 50' hose	3	PL05
1.25" Hosecuffs	17	HC1
5/8" Wall Penetrators	17	WP2
End Cap Plugs	10	QCEP01
Carry Bag	1	CB1
Manual	1	





When drying negatively using an Air Scrubber, the Direct-It may be positioned on top without bungee cord attachment.



Bungee cords attach the Direct-It to axial fans to dry both positively and negatively.

SUGGESTED HOSE LENGTHS

Some suggested lengths for setting up the Direct-It or Direct-It IN:

LENGTH	QTY
12'	3
10' 8"	2
9'	2
8'	2
6' 6"	2
5'	2
3' 6"	2
2'	2

REPLACEMENT PARTS

This part is black in color. It will slide into the end of the 1 1/4" hose or into a 1.25" Hose Cuff. The business end of the Penetrator is 5/8".

We **HIGHLY RECOMMEND** using an adjustable drill stop. The depth of drill penetration will be based upon the thickness of material being drilled. The drill should be stopped from penetrating hidden wall components such as electrical wires or plumbing pipes. Use a 11/16" paddle bit for the 5/8" Wall Penetrator.

Bag of Wall Penetrators - Part # WP2

1.25" x 50' of hose - Part # PL05



IMPORTANT Safety warnings are found on page 2.

WARRANTY

DIRECT-IT IN / DIRECT-IT - 1 Year

Limitations & Exclusions: This warranty will not extend to Injectidry products showing any accidental damage, alteration, normal wear, disassembly, lack of proper maintenance, damage from fire or flood, damage from corrosive or other chemicals, improper voltage use, unauthorized repairs, use of non-genuine parts and materials, misuse, or any other causes beyond the control of Injectidry. The warranty obligation extends only to the repairs or replacement of parts found to be defective upon the examination and the decision of Injectidry Systems.

The preceding limitations constitute the entire warranty. No other warranty or responsibility is expressed or implied. The warranty includes legal rights to the original purchaser, and additional rights may be available, varying state to state. In addition, Injectidry Systems Repair Department must authorize all incoming products and/or repair work to be completed by an authorized repair center. Injectidry Systems is not responsible for any repairs or modifications to any of its products, unless completed by Injectidry Systems or an authorized service center. We are not responsible for subsequent damaged caused by the user and or its agents.

CUSTOMER SERVICE

Return for Repair Request: You can obtain a Request for Repair Form by calling 800.257.0797 or by going to our website for a form on the "Contact Us" page.

Return Request: You can obtain a Request for Return Form by calling 800.257.0797 or by going to our website for a form on the "Contact Us" page.

Incomplete Shipments: All shortages must be reported within five business days.

Be sure to check the number of cartons or packages. You can compare this count with the total listed on Bill of Lading. Confirm that you have received all cartons or packages pertaining to this shipment.

If quantities do not match, have the delivery driver note shortage. If the missing cartons or packages do not show up in the next few days, contact the Shipping Department and we will reship on a new order.

You must file a Freight Claim for shorted packages if the count differs from the Bill of Lading. For your protection, the carrier who delivers merchandise to your door is responsible for any loss or damages. Acceptance of the shipment by the carrier company is acknowledgement that the articles were delivered to them were in good condition and properly packaged.

Freight Damage

Injectidry Systems is not responsible for freight damage. We will assist you in filing a freight claim. The shipper must be notified within 48 hours or by the next business day.

Immediately upon receiving the shipment, note all damage with the driver or on the waybill. If damages are found after the packaging is opened, call the transportation company to report the concealed freight damage and request an inspection.

If the shipment arrived via LTL, contact shipping@injectidry.com with the pro # and the details of the problem(s).

If the shipment arrived via UPS small packages, visit our website for freight claims procedures www.injectidry.com or go to the following UPS link for filing a claim https://wwwapps.ups.com/webClaims/create?loc=en_US&report_type=1

DO NOT throw away the packaging, as it would be needed for filing a freight damage claim. Injectidry or the shipper will reimburse for approved and validated claims that are paid by the transportation carrier. If you do not follow these procedures we may not be able to assist you in recovering the lost value.

NOTICE: Certain uses of heating equipment in conjunction with real-time temperature-monitoring equipment and filtration devices might infringe on certain United States patents and is therefore strongly discouraged. The user is advised to seek legal counsel before use of that combination of equipment. Injectidry Systems, Inc., Seller, does not assume and hereby disclaims liability for patent infringement claims arising from such use. Buyer agrees not to use Seller's equipment, training, literature or advice for the purpose of using heat or inducing others to use heat to destroy organisms, remove toxins from a structure, remediate mold, or kill insects, bacteria, viruses, dust mites, spiders or fungi. Your use of Seller's equipment and/or training services confirms your agreement not to use heat equipment in such a manner.